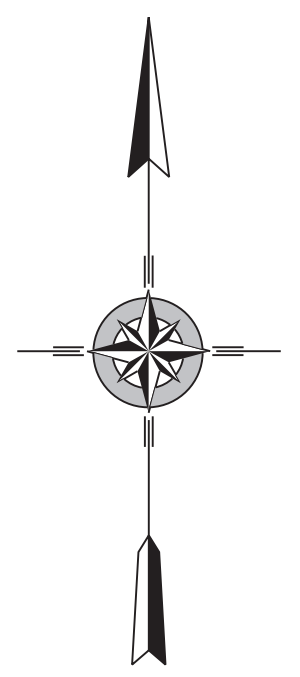
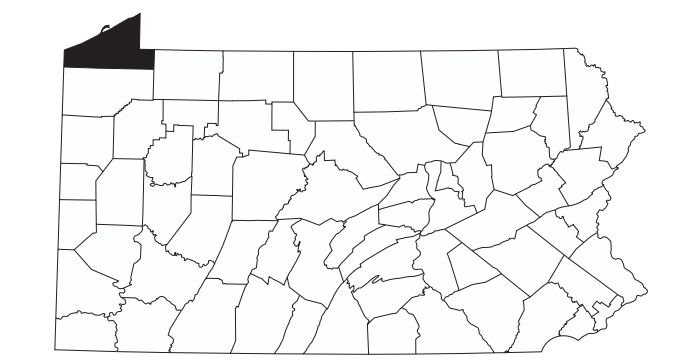


- LEGEND**
- FULLY CONTROLLED ACCESS HIGHWAY
 - MULTILANE HIGHWAY
 - TRUNK ROAD
 - RESERVED STATE ROAD AND HIGHWAY
 - STATE MAINTAINED BRIDGE
 - TRUNK ROAD
 - TRUNK ROAD (IMPROVED)
 - OTHER ROAD
 - INTERSTATE INTERCHANGING NUMBER
 - INTERSTATE TRAFFIC ROUTE
 - UNITED STATES TRAFFIC ROUTE
 - REMOVABLE TRAFFIC ROUTE
 - RAILROAD ON BRIDGE
 - RAILROAD (UNIMPROVED TRACK RESTRICTED)
 - STATE LINE
 - COUNTY LINE
 - INCORPORATED CITY
 - INCORPORATED BOROUGH
 - STATE CAPITAL
 - COUNTY SEAT
 - OTHER COMMUNITIES
 - CITY OF UNIVERSITY
 - STATE POLICE FACILITY
 - COURT
 - STATE GOVERNMENT RESERVE PROPERTY
 - FEDERAL STATE INSTITUTIONS
 - PARADE GALLERY
 - PORT OF ENTRY
 - MOBILE RACE TRACK
 - REARAGE
 - REST AREA AND COMFORT FACILITY
 - RECREATION CENTER AND COMFORT FACILITY
 - STATE FISH HATCHERY
 - STATE FOREST NATURAL AREA
 - STATE FOREST PLANT AREA
 - FEDERAL RECREATION SITE
 - STATE PARK LAND / RECREATION
 - STATE GAME LAND AND NUMBER
 - STATE AND FEDERAL FOREST LAND
 - FEDERAL PARK / RECREATION LAND
 - FEDERAL RESERVATION

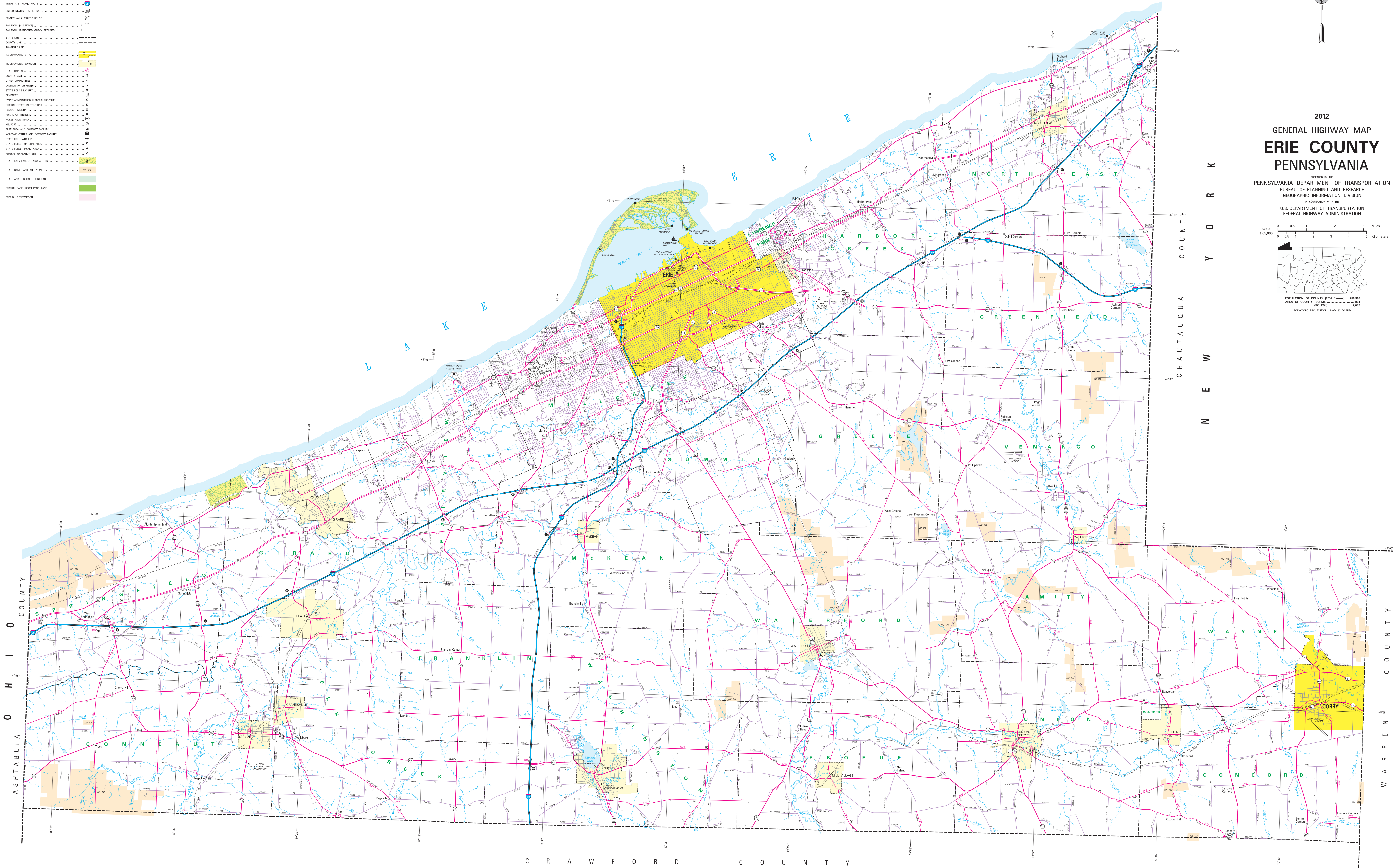


2012
GENERAL HIGHWAY MAP
ERIE COUNTY
PENNSYLVANIA

PREPARED BY THE
PENNSYLVANIA DEPARTMENT OF TRANSPORTATION
 BUREAU OF PLANNING AND RESEARCH
 GEOGRAPHIC INFORMATION DIVISION
 IN COOPERATION WITH THE
 U.S. DEPARTMENT OF TRANSPORTATION
 FEDERAL HIGHWAY ADMINISTRATION



POPULATION OF COUNTY (2010 Census).....288,566
 AREA OF COUNTY (2010).....2,864
 SQUARE MILES.....2,862
 STATISTICAL PROJECTION - YEAR 2012 DATA



COPIES OF THIS MAP ARE AVAILABLE AT NOMINAL COST
 CONTACT:
 PENNSYLVANIA DEPARTMENT OF TRANSPORTATION
 SALES STORE
 P.O. BOX 3826
 HARRISBURG, PENNSYLVANIA 17105 - 3826
 TELEPHONE: (717) 767-4344

USERS NOTING ERRORS OR OMISSIONS ON THIS MAP
 ARE REQUESTED TO REPORT THEM TO:
 PENNSYLVANIA DEPARTMENT OF TRANSPORTATION
 BUREAU OF PLANNING & RESEARCH
 GEOGRAPHIC INFORMATION DIVISION
 P.O. BOX 3826
 HARRISBURG, PENNSYLVANIA 17105 - 3826
 E-MAIL: mapcorrections@pa.gov