



PLEX

Plex announces Plex Pass price increase and paywall for remote streaming

 [Chance Miller](#) | Mar 19 2025 - 11:00 am PT |  [36 Comments](#)



As it continues to test a [dramatic redesign of its app](#), Plex has announced several other imminent changes. In a [blog post today](#), the company announced a price increase for its Plex Pass subscription, alongside changes to remote streaming for personal media.

Starting on April 29, 2025, Plex says that Plex Pass prices will increase as follows:

- **Monthly:** \$6.99 (up from \$5.99)
- **Yearly:** \$69.99 (up from \$49.99)
- **Lifetime:** \$249.99 (up from \$119.99)

This marks the first price increase for Plex Pass in over 10 years. Plex says the price increase is necessary “to keep up with rising costs” while also staying “committed to ensuring both Plex Pass and our support for personal media continue to thrive.”

The company says there are three primary things on the Plex roadmap for personal media users this year:

- A valuable integration with Common Sense Media featuring extras for Plex Pass holders.
- A new bespoke server management app that works on browsers or mobile clients for a better curation experience with more visibility into who is on your server, and how.
- An open and documented API for server integrations, along with the

Featured

from 9TO5Mac



[2025 Buyer's Guide: Deciding which iPad to buy is easier than you think](#)

 [Fernando Silva](#) | Mar 20 2025



[Apple hit with lawsuit over 'false advertising' of Apple Intelligence features](#)

 [Chance Miller](#) | Mar 20 2025



[Rumor Replay: Siri shake-ups, iOS 19 goals, C2 modem, more](#)

 [Ryan Christoffel](#)
| Mar 20 2025



[Apple puts Vision Pro creator in charge of Siri as Apple Intelligence rollout falters](#)

 [Chance Miller](#) | Mar 20 2025

- An open and documented API for server integrations, along with the ability to create custom metadata agents.

But there's another big change for Plex users who utilize the remote playback feature for streaming personal media when not on the same local network as the server. Starting on April 29, Plex says remote playback will no longer be available as a free feature.

Top comment by [Tim L](#) ★Liked by 11 people

Speaking as a PlexPass member of over a decade, I regret to say that its developers have allowed the basic functionality of the system to languish while they focus on niche features and interface refreshes. Plex has basic playback issues with many h.265-encoded video files and fails completely with certain Dolby Vision profiles. These problems have existed for years now, and Plex developers have done nothing about it. It has gotten so bad that I've switched over to Infuse. Files that seemed hopelessly corrupt with Plex play flawlessly with Infuse. The situation is pretty frustrating, not only because of the added expense but because I consider the Plex interface to be nearly flawless. It was hard to recommend Plex before. At twice the price, it's even harder to do now.

[View all comments](#)

A key detail from this announcement: If a server owner has a Plex Pass, all users with access can stream remotely at no extra charge. For example, if you share a Plex server with family members outside your home, they can stream content as long as you have a Plex Pass subscription.

Upgrading to any Plex Pass subscription is a great option for server owners, as it ensures all users accessing the Plex Media Server can stream remotely, without an additional charge. Even if you don't run your own Plex Media Server, a Plex Pass subscription will not only allow you to stream remotely from any server to which you have access, but also lets you make use of other Plex Pass functionality like Skip Intro and Skip Credits

Plex is also introducing a new Remote Watch Pass subscription option:

Our brand-new subscription offering, Remote Watch Pass, allows individual users to remotely stream media from any personal media server to which they have access. This is a great option for users who don't run their own server and are looking to stream from a server belonging to a friend or family member who does not have a Plex Pass. It's also a good alternative for server owners who may not need the full feature offering of a Plex Pass, but are looking for a more cost-effective option to access their media remotely. Beginning April 29, 2025, Remote Watch Pass will be available for an introductory price of \$1.99/month or \$19.99/year.



Finally, Plex is doing away with its mobile unlock fee:

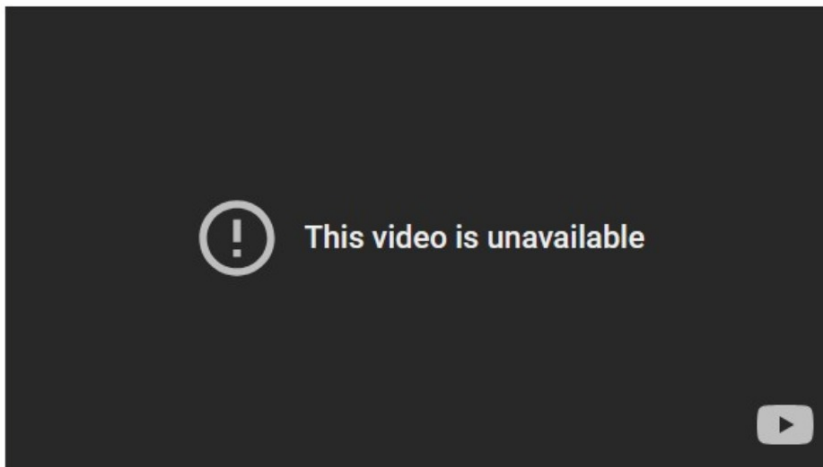
Our Android and iOS mobile apps previously required a one-time activation fee or Plex Pass to remove the one-minute playback limitation when streaming content from a Plex Media Server. As part of these changes, there will no longer be any such one-minute playback limitation. Playing content on a local network will be free in the new mobile apps. These changes will go into effect when the new mobile Plex experience exits the preview period and launches publicly.

More details on today's Plex announcements are available [on the company's website](#).

[Add 9to5Mac to your Google News feed.](#)



[Check out 9to5Mac on YouTube for more Apple news:](#)



Comments

Conversation 36 Comments

66 Viewing

Log in | Sign up

What do you think?



Sort by Best

TL

Tim L

1 day ago

Speaking as a PlexPass member of over a decade, I regret to say that its